

THERE ARE FACTS,  
THEN THERE'S A GOOD STORY

Sofitel Ambassador Seoul Hotel & Serviced Residences



SOFITEL

AMBASSADOR SEOUL  
HOTEL & SERVICED RESIDENCES



# CONTENTS

- 01 SOFITEL BRAND STORY
- 02 DESTINATION
- 03 HOTEL INFORMATION
- 04 ROOM
- 05 FACILITY
- 06 FOOD & BEVERAGE
- 07 MEETING & EVENT

01

# SOFITEL BRAND STORY





LIVE THE FRENCH WAY



Imagine modern luxury hotels where the essence of each destination is artfully blended with sophisticated French art de vivre(art of living), creating chic experiences for guests to indulge in and celebrate life's pleasures, the French way.



## FRENCH ORIGINS & FRENCH REFINEMENT



Sofitel Paris Le Faubourg, France



Sofitel Kunming , China



Sofitel Paris Tour Eiffel Baltimore, France



## BRAND CONCEPTS

### GASTRONOMIE FRANCAISE

---

- Enjoy Wine, Cheese, Bread & Charcuterie selection
- Signature restaurant: Fait Maison. (5 F&B outlets)

### SERVICED RESIDENCES

---

- Offer same as Hotel service
- Extended stay for Parisian life; Luxury living
- Dedicated living space lobby

### FRENCH ART DE VIVRE

---

- French Luxury interior
- Experience French Life Style
- French Welcome Greeting
- Indulgent bath
- Sofitel Fitness & Spa
- Candle Ritual

### LIVE THE FRENCH WAY

---

- Invite Sofitel Wine Days & Culture event
- Experience Le Goûter at Parisian Lounge
- Magnifique Wedding & Events

02

# DESTINATION





K-DRAMA LOCATION



Netflix | The Glory (더 글로리)  
Sofitel Seoul Entrance





## K-DRAMA LOCATION



Netflix | The Glory (더 글로리)  
Sofitel Seoul Entrance



## K-DRAMA LOCATION



JTBC | Reborn Rich (재벌집 막내아들)  
5F Salon S





## K-DRAMA LOCATION



JTBC | The Interest of Love (사랑의 이해)  
Opera Suite Room



## K-DRAMA LOCATION



JTBC | The Interest of Love (사랑의 이해)  
Luxury Lake Room





K-DRAMA LOCATION



JTBC | The Interest of Love (사랑의 이해)  
Modern Japanese Gastronomy MIO



## K-DRAMA LOCATION



JTBC | The Interest of Love (사랑의 이해)  
Main Entrance, Front Desk





# JAMSIL, THE GREATER GANGNAM

## SOFITEL SEOUL LOCAL GUIDE MAP

**1 SEOKCHON LAKE** 석촌호수  
THE ONE AND ONLY LAKE IN SEOUL AND IS FAMOUS AS CHERRY BLOSSOM SPOT IN APRIL.

**DISTANCE / TIME** about 90m / 1min walk

**2 LOTTE WORLD TOWER: SHOPPING MALL, AQUARIUM**  
롯데월드타워: 롯데월드몰, 롯데월드 아쿠아리움  
THE WORLD'S FIFTH TALLEST BUILDING WITH VARIOUS ENTERTAINMENTS.

**DISTANCE / TIME** about 300m / 5mins walk

**LOTTE DUTY FREE WORLD-TOWER STORE**  
롯데월드타워 면세점

LOCATED IN LOTTE WORLD TOWER, YOU CAN ENJOY THE PLEASURE OF SHOPPING WITH CUSTOMIZED SERVICE.

**DISTANCE / TIME** about 300m / 5mins walk

**SEOUL SKY** 서울 스카이 전망대

AS THE TALLEST BUILDING IN SOUTH KOREA, IT IS THE ONLY PLACE WHERE YOU CAN TAKE IN GORGEOUS 360 DEGREE VIEW OF SEOUL, THE CAPITAL CITY OF SOUTH KOREA.

**DISTANCE / TIME** about 300m / 5mins walk

**LOTTE WORLD ADVENTURE** 롯데월드 어드벤처

FIRST IN KOREA, AND THE WORLD'S LARGEST INDOOR THEME PARK LOTTE WORLD IS THE COMPLEX LIFE SPACE WHERE YOU CAN ENJOY ATTRACTION, DINING, AND SHOPPING.

**DISTANCE / TIME** about 650m / 11mins walk

**3 BANGI FOOD STREET** 방이동 먹자골목

A FOOD STREET FILLED WITH RESTAURANTS AND BARS IN SONGPA-GU DISTRICT.

**DISTANCE / TIME** about 280m / 4mins walk

**4 SONGLIDANGIL** 송리단길

A STREET FULL OF POPULAR RESTAURANTS AND CAFES LOCATED RIGHT NEXT TO THE SEOKCHON LAKE.

**DISTANCE / TIME** about 500m / 15mins walk

**5 SEOUL SEOKCHON-DONG ANCIENT TOMBS** 서울 석촌동 고분

TOMBS OF KINGS AND NOBLES BUILT DURING THE HANSEONG PERIOD OF BAEKJE.

**DISTANCE / TIME** about 2km / 30mins walk

**6 JAMSIL SPORTS COMPLEX** 잠실운동장

THE OLYMPIC MAIN STADIUM HAS BECOME A HISTORICAL ATTRACTION FOR MANY FOREIGN TOURISTS AS WELL AS INTERNATIONAL SOCCER GAMES AND K-POP CONCERTS.

**DISTANCE / TIME** about 4km / 12mins by car

**7 JAMSIL HAN RIVER PARK** 잠실한강공원

THE MAJOR RIVER IN SOUTH KOREA ALIGNED WITH BICYCLE PATHS, PICNIC SPOTS AND WALKWAYS.

**DISTANCE / TIME** about 2km / 32mins walk

**8 OLYMPIC PARK** 올림픽 공원

A NATIONAL PARK WHERE THE SEOUL OLYMPIC WAS HELD IN 1988.

**OPERATING HOURS** 05:00-22:00 (BY WALKING OR BICYCLE)  
06:00-22:00 (BY CAR)

**DISTANCE / TIME** about 2km / 32mins walk

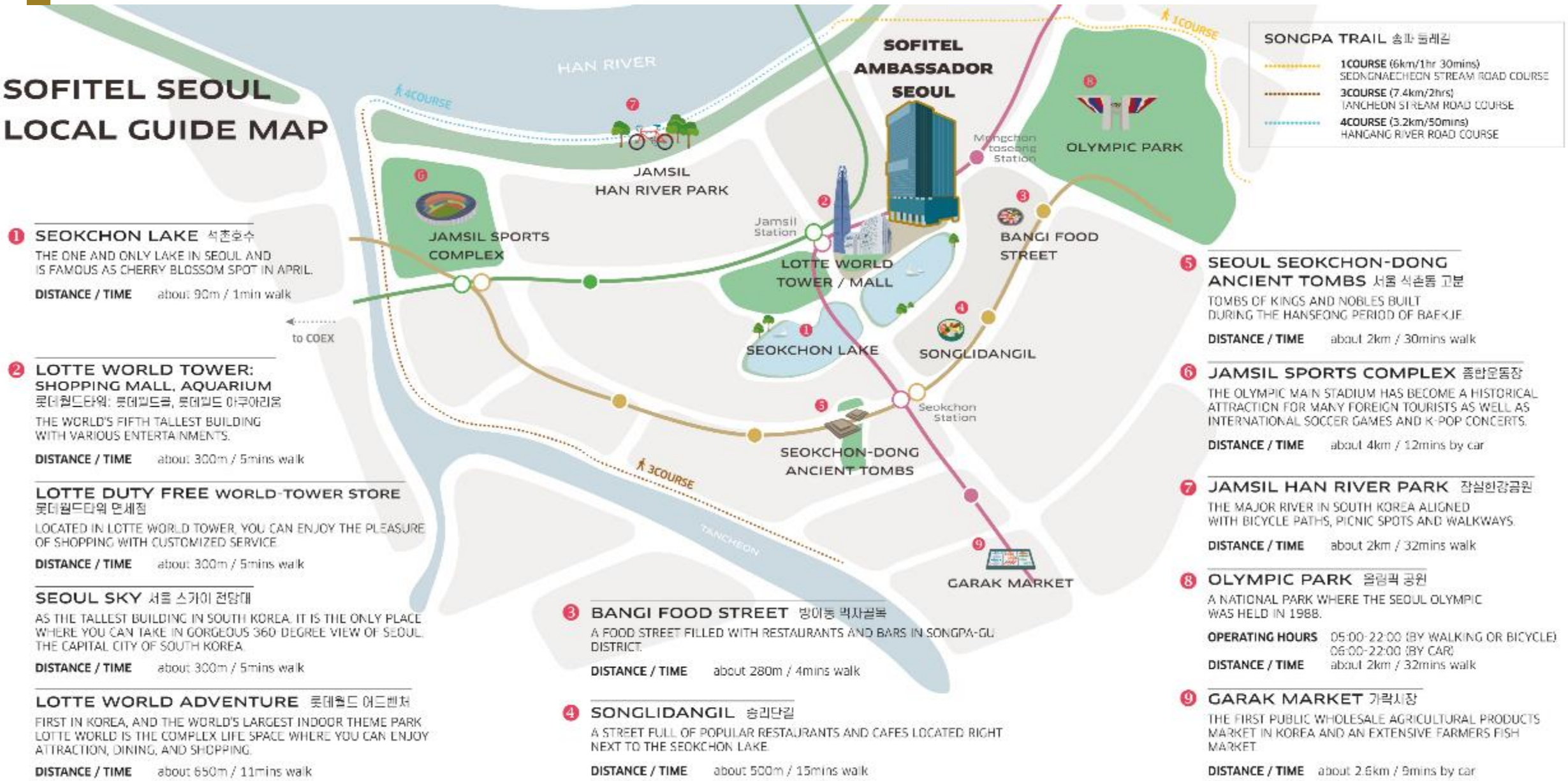
**9 GARAK MARKET** 가락시장

THE FIRST PUBLIC WHOLESALE AGRICULTURAL PRODUCTS MARKET IN KOREA AND AN EXTENSIVE FARMERS FISH MARKET.

**DISTANCE / TIME** about 2.6km / 9mins by car

### SONGPA TRAIL 송파 둘레길

- 1 COURSE** (6km/1hr 30mins)  
SEDONGNAECHEON STREAM ROAD COURSE
- 3 COURSE** (7.4km/2hrs)  
TANCHEON STREAM ROAD COURSE
- 4 COURSE** (3.2km/50mins)  
HANGANG RIVER ROAD COURSE





# JAMSIL, THE GREATER GANGNAM

## LEISURE, SHOPPING, AND ENTERTAINMENT



LEISURE

Seokchon Lake  
Lotte World adventure  
Lotte World TowerOlympic park  
Songlidan-gil  
Garak market, Han River  
Chaunma geunlin park  
Songpa Dulaegil



CULTURE

Lotte World Folk Museum  
Museum209  
Seoul Olympic Museum of Art  
Charlotte theater



SHOPPING

Lotte Department Store  
Lotte Duty Free  
AVENUEL  
COEX





03

# HOTEL INFORMATION



## HOTEL INFORMATION



Address	209, Jamsil-ro, Songpa-gu, Seoul 05552 Korea
Opening Date	September 30, 2021
Grade	5-Star
Room	TOTAL 563 Rooms 403 Hotel rooms(59 Suites), 160 Serviced Residences Hotel (17F - 31F) / Serviced Residence (7F - 14F)
Food & Beverage	FAIT MAISON   Chic Bistro MIO   Modern Japanese Gastronomy JARDIN D'HIVER   Gourmet Café L'ESPACE   Parisian Lounge LATITUDE32   The Roof Bar
Facilities	Sofitel Fitness & Swimming Pool SOFITEL SPA BY BEAUTÉ BR Kids lounge Business Corner
Banquet Facilities	Grand Ballroom Vendôme (628 sqm) Bastille Room (240 sqm) Concorde Room (148 sqm)





## FIRST SOFITEL IN SOUTH KOREA

The 1<sup>st</sup> Hotel & Residence complex in Gangnam district

The largest scale luxury hotel in Jamsil area

(Hotel 403 room, Residence 160 room, Total 563room)

The best location

(Nearby Jamsil station and beautiful view of Seokchon Lake)

## HOTEL INFORMATION



## BY PUBLIC TRANSPORTATION

- SUBWAY  
Line 2, 8 Jamsil Station Exit 10 (200m)  
Line 9 Songpa Naru Station Exit 2 (790 m)
- BUS (Jamsil Metropolitan Transit Center)  
3217, 3313, 3314, 3315, 3317, 3414, 4319, 1007-1, 1100,  
1700, 2000, 6900, 7007, 8001, 301, 341, 360, 362

## FROM THE AIRPORT

- Gimpo Airport  
Olympic Highway -> Turn left to 'Olympic Park' from Jamsil Station (approximately 1 hour 20 minutes 35 km)
- Incheon International Airport  
Yeongjonghaeanbuk-ro -> Incheon International Airport Expressway -> Olympic Highway  
-> Turn left to 'Olympic Park' at Jamsil Station (approximately 1 hour and 30 minutes / 73 km)



# HOTEL INFORMATION

## FLOOR MAP

- HOTEL FACILITIES
- RESIDENCE FACILITIES
- OTHER FACILITIES
- RESTAURANT
- BANQUET

LEVEL	FACILITIES			
32F	CLUB MILLÉSIME		LATITUDE 32	
17F~31F	HOTEL ROOMS & SUITES			
16F	SOFITEL FITNESS & SWIMMING POOL		SOFITEL SPA BY BEAUTÉ BR	
7F~14F	SERVICED RESIDENCES ROOMS			
6F	HOTEL LOBBY	JARDIN D'HIVER	L'ESPACE	CONCORDE ROOM
5F	RESIDENCE LOBBY (Salon S)	FITNESS CENTER	KIDS LOUNGE	BUSINESS CORNER
4F	GRAND BALLROOM VENDÔME		FAIT MAISON	
3F	BASTILLE ROOM		MIO	
2F	RETAIL SHOP (BRIDGE)			
1F	WELCOME LOBBY - CONCIERGE			
B1F	RETAIL SHOP			
B2F~B4F	PARKING			



# 04

# ROOM

- HOTEL
- RESIDENCE





# ROOM



Room Type	Size	No. of Rooms
Luxury	37m <sup>2</sup>	62
Magnifique	44m <sup>2</sup>	73
Luxury Lake	37m <sup>2</sup>	165
Club Luxury	37m <sup>2</sup>	29
Magnifique Family Twin	57m <sup>2</sup>	15
Prestige Suite	70m <sup>2</sup>	44
Opera Suite	135m <sup>2</sup>	14
Presidential Suite	426m <sup>2</sup>	1
<b>TOTAL</b>		<b>403</b>

## DISTINCTIVE FEATURES

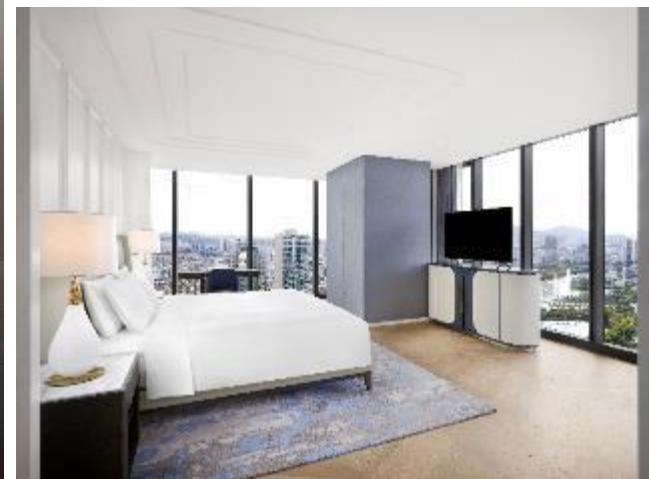
- Majestic Seokchon lake view rooms
- Chic French style and design
- A.I speaker (Voice assistant)
- Sofitel MyBed Mattress & Base
- French Bath Amenities Diptyque Paris

## GUEST SERVICE

- Concierge
- Daily Housekeeping Service
- Laundry Service
- Valet Parking
- 24hour in-room dining service



# HOTEL SUITES & ROOMS



ROOM - Hotel



LUXURY

34 Luxury & 25 Luxury Twin  
(1 King or 2 Single)

37 SQM





ROOM - Hotel



## LUXURY LAKE

120 Luxury Lake & 54 Luxury Lake Twin  
(1 King or 2 Single)

37 SQM



ROOM - Hotel



MAGNIFIQUE

70 Magnifique  
(1 King)

44 SQM





ROOM - Hotel



## MAGNIFIQUE FAMILY

15 Magnifique Family  
(1 King & 1 Single)

57 SQM



ROOM - Hotel



## PRESTIGE SUITE

29 Prestige Suite

(1 Super King)

15 Prestige Family Suite

(1 Super King & 1 Sofabed)

70 SQM





ROOM - Hotel



## OPERA SUITE

14 Opera Suite  
(1 Super King)

135 SQM





ROOM - Hotel



## PRESIDENTIAL SUITE

1 Presidential Suite  
(2 Super King)

426 SQM





# ROOM



## SERVICED RESIDENCES

Room Type	Size	No. of Rooms
Studio	42m <sup>2</sup>	16
Studio Twin	38m <sup>2</sup>	32
One Bedroom	71m <sup>2</sup>	104
Two Bedroom	92m <sup>2</sup>	8
<b>TOTAL</b>		<b>160</b>

### DISTINCTIVE FEATURES

- Majestic Seokchon lake view rooms
- Chic French style and design
- A.I speaker (Voice assistant)
- Sofitel MyBed Mattress & Base
- French Bath Amenities Diptyque Paris

### GUEST SERVICE

- Concierge
- Daily Housekeeping Service
- Laundry Service
- Valet Parking
- 24hour in-room dining service





ROOM - SERVICED RESIDENCES



STUDIO

24 Studio & 24 Studio Twin  
(1 King or 2 Single)

42 SQM





ROOM - SERVICED RESIDENCES



## ONE-BEDROOM SIGNATURE SUITE

104 One-Bedroom Signature Suite  
(2 Super King)

71 SQM





ROOM - SERVICED RESIDENCES



## TWO-BEDROOM EXECUTIVE SUITE

8 Two-Bedroom Executive Suite  
(1 Super King & 2 Single)

92 SQM





# 05

# FACILITY

- Club Millésime
- Sofitel Spa by Beauté BR
- Sofitel Fitness
- Business Center / Kids Lounge



## FACILITY



# CLUB MILLÉSIME

Access our exclusive retreat on the 32nd floor, and soak in the magnificent panoramic views. From thoughtful touches to heartfelt surprises, expect ultimate luxury and exclusivity in a chic and intimate setting.

### CLUB MILLESIME BENEFITS

- Private Check-in
- Club Millesime Breakfast
  - Afternoon Tea
- Evening cocktail & snack
- Meeting room is available for 1 hour upon advanced reservation

### CLUB MILLESIME DETAILS

- Operation Hour: 7:00 AM - 10:00 PM
- Lounge Breakfast 7:00 AM - 10:00 AM
  - All-day Snack 12:00 PM - 5:00 PM
  - Afternoon Tea 2:00 PM - 4:00 PM
- Evening Cocktail: \* It may be operated from one shift up to four, depending on the demand.







## SOFITEL FITNESS

Enjoy a dip in our 25-metre long swimming pool, located on the 16th floor, with lake and city view. Floor-to-ceiling windows make the pool even more attractive and kids pool and outdoor whirl pool offer you a distinctive experience.

### • SOFITEL FITNESS OPERATION HOUR & FEATURES

Gym & Pool: 6:00 AM - 10:00 PM

- Closing Day: 1<sup>st</sup> Tuesday of Every Month (16F)  
2<sup>nd</sup> Tuesday of Every Month (5F)
- Pool entry is limited to hotel guests.
- For your comfort and safety, all hotel guests are required to make pre-booking to use the pool.
  - One entry per person per day is allowed.



## FACILITY



### SOFITEL SPA BY BEAUTÉ BR

Sofitel Spa by Beauté BR, located on the 16th floor, is a healing space with five private treatment rooms including two couple treatment rooms and uses a world-class French luxury spa brand Biologique Recherche products.

Our treatments are based on a personalized dermo-cosmetic diagnosis following analysis of your skin instant, to ensure they match your needs. Professional therapists with global standard techniques provide the best impression by relaxing and re-balancing the body and mind in serene atmosphere.

**OPERATION HOUR**  
10:00 AM - 10:00 PM

**RESERVATION INQUIRY**  
+82 (0)2 2092 6085







## KIDS LOUNGE

Sofitel Ambassador Seoul's Kids Lounge is a play area for children on the 5th floor.

The colorful interior stimulates children's creativity, and the natural light coming in through the floor-to-ceiling glass windows makes the space more delightful.

### LOCATION

5<sup>th</sup> Floor

### OPERATION HOUR

8:00AM - 9:00PM

### CLOSING DAY

Second Tuesday of Every Month



## BUSINESS CORNER

The business corner located on the 5th floor is a space provided to expedite tasks comfortably. It is equipped with computers, printers, scanners, and additional office equipment for all of your practical needs.

# 06

## FOOD & BEVERAGE

- FAIT MAISON
- MIO
- JARDIN D'HIVER
- L'ESPACE
- LATITUDE32





## FOOD & BEVERAGE



### FAIT MAISON | Chic Bistro

A stunning venue located on the fourth floor overlooking Seockchon Lake. Paying tribute to famous French brasseries, Fait Maison serves refined yet authentic bistro food including dishes inspired by the Parisian dining scene and the Mediterranean coast.

- 180 seats with private dining room

Location: 4F

Opening hours: BREAKFAST 6:30 AM - 10:30 AM  
LUNCH WEEKDAY 11:30 AM - 2:30 PM  
WEEKEND 12:00 AM - 3:00 PM  
DINNER 6:00 PM - 10:00 PM

### MIO | Modern Japanese Gastronomy

A marriage of the finest Korean ingredients and Japanese cooking techniques, served in a setting of intimate luxury. MIO offers a memorable dining experience thanks to the delicate cuisine and discreet service.

- 83 seats with two private dining rooms

Location: 3F

Opening hours: 11:30 AM - 2:30 PM, 6:00 PM - 10:00 PM



## FOOD & BEVERAGE



### JARDIN D'HIVER | Gourmet Café

Inspired by typical French Bakery shop, this venue offers an array of delicacies from chocolates and renowned sweets to savory classics such as rustic ham & butter baguette and delicious salads.

Overlooking the urban garden terrace of the hotel, Jardin D'Hiver is the perfect place to linger over a cup of coffee or enjoy a quick bite. Takeaway and gourmet gifts are available.

- 49 seats

Location: 6F

Opening hours: 8:00 AM - 9:00 PM

### L'ESPACE | Parisian Lounge

Escape into the relaxed and sophisticated lounge while enjoying the charming lake view from the sixth floor.

The perfect spot to indulge in our all day dining menu, experience “Le Goûter” Sofitel’s Signature Afternoon Tea, or unwind at sunset with our exquisite concoctions from the bar.

- 70 seats

Location: 6F

Opening hours

Weekdays | 10:00 AM - 10:00 PM (Last Order 09:00 PM)

Weekends | 08:00 AM - 10:00 PM (Last Order 09:00 PM)





## FOOD & BEVERAGE



### LATITUDE32 | The Roof Bar

Offering majestic floor-to-ceiling views over the Jamsil neighborhood, our rooftop bar takes you on a galactic journey. This destination in a cosmic setting serves a large selection of crafted beers, sublime cocktails, carefully curated wines and a variety of Chef's favorite snacks. Elegant and unique, Latitude32 is soon to be a district institution!

- 129 seats with outdoor terrace

Location: 32F

Opening hours: 5:00 PM - 11:00 AM





# 07

- BANQUET ROOMS
- MEETING ROOM FLOOR GUIDE
- GRAND BALLROOM VENDÔME
- BASTILLE ROOM
- CONCORDE ROOM

## MEETING & EVENT





## MEETING & EVENT

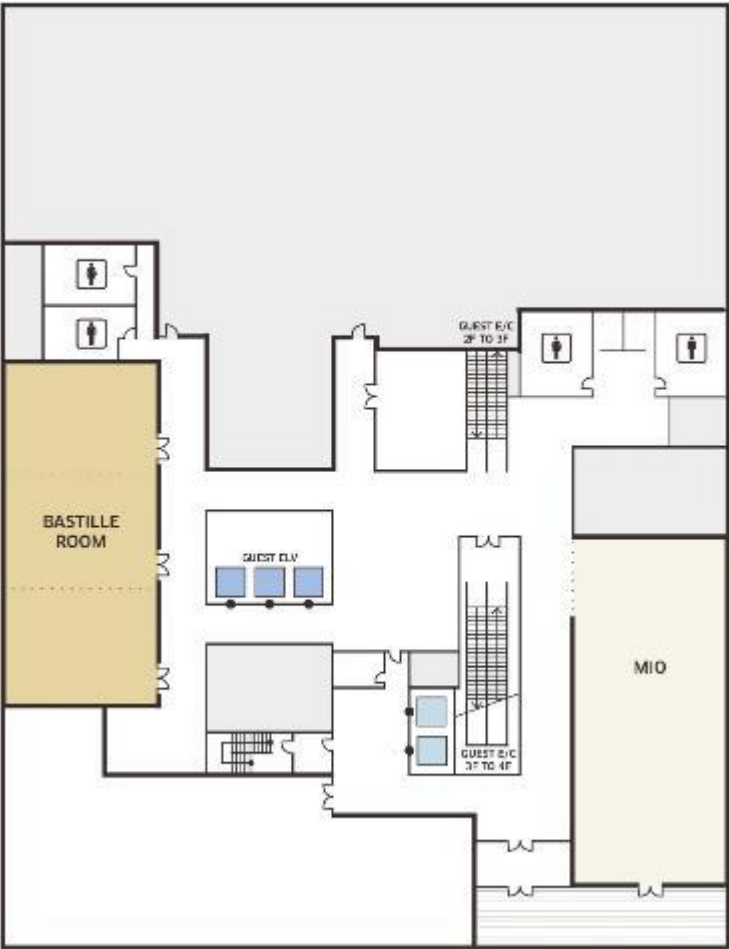
### BANQUET ROOMS

Grand Ballroom Vendôme and Bastille Room accommodating up to 320 guests are perfect venues for a magnifique experience.

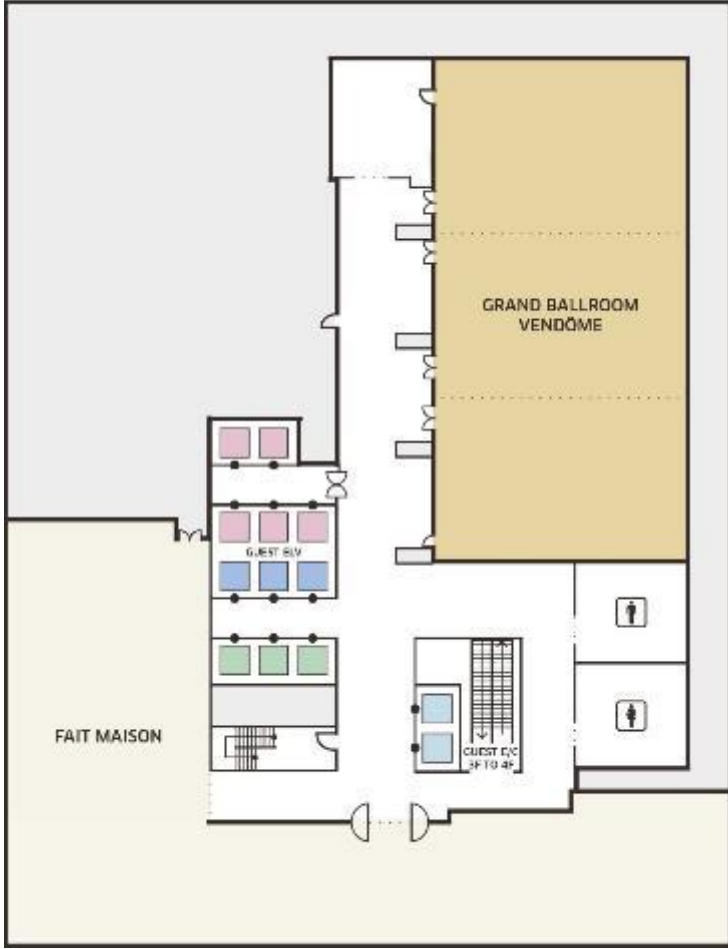
MEETING ROOMS	W X D X H	SIZE (m2)	BANQUET	CLASS	U-SHAPE	LOCATION
GRAND BALLROOM VENDÔME A+B+C	17 X 33.6 X 5.5	628	320	315	96	4F
GRAND BALLROOM VENDÔME A+B / B+C	17 X 22.4 X 5.5	418	200	180	60	
GRAND BALLROOM VENDÔME A / B / C	17 X 11.2 X 5.5	209	100	90	42	
BASTILLE ROOM A+B+C	10.1 X 23.1 X 2.6	240	100	99	66	3F
BASTILLE ROOM A+B / B+C	10.1 X 15.4 X 2.6	162	80	60	42	
BASTILLE ROOM A / B / C	10.1 X 7.7 X 2.6	81	40	27	18	
CONCORDE ROOM A+B	8.1 X 18 X 3.05	148	60	48	48	6F
CONCORDE ROOM A / B	8.1 X 9 X 3.05	12	30	18	18	

# MEETING & EVENT

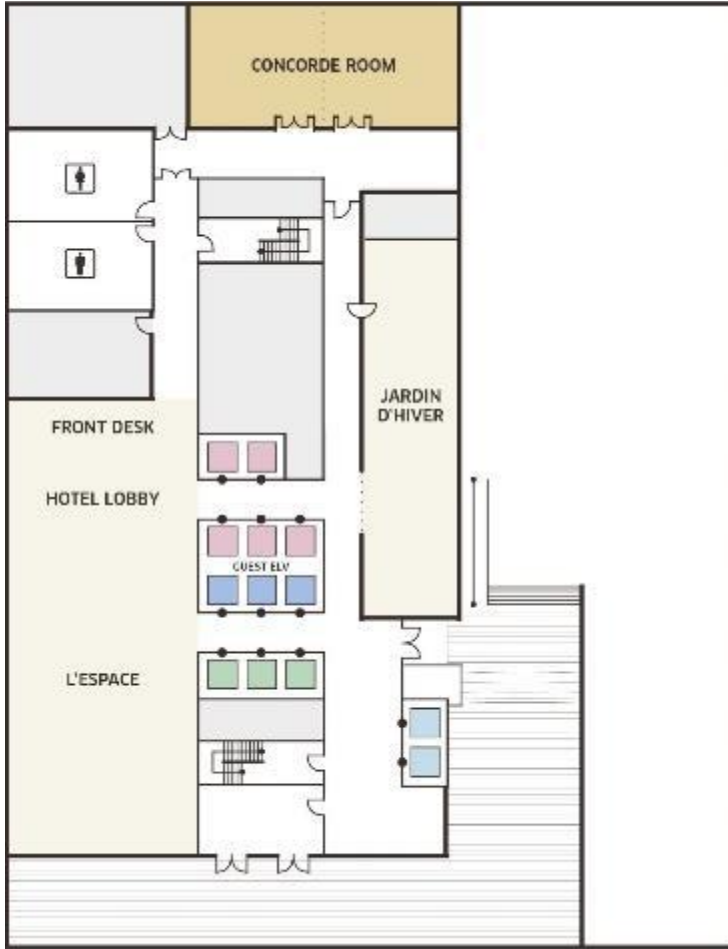
3F Floor Plan



4F Floor Plan

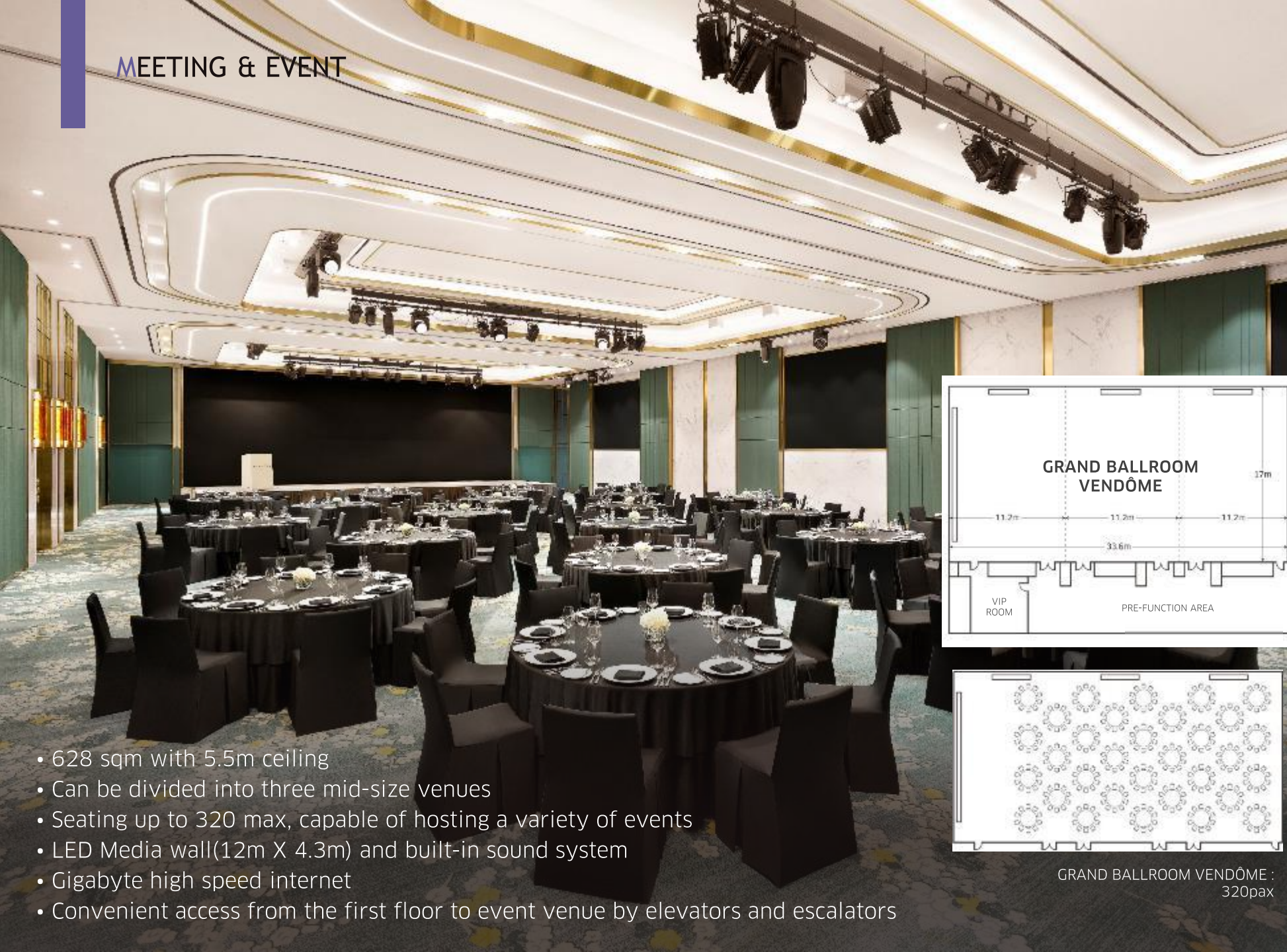


6F Floor Plan

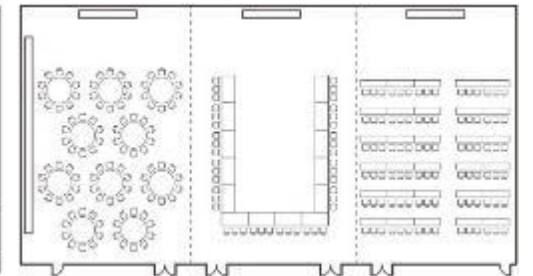
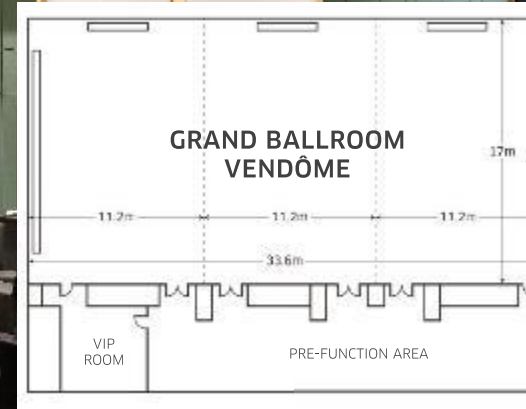


- PUBLIC ELEVATOR (B4-B1, 1-6F)
- PUBLIC ELEVATOR (B4-B1, 1-6F, 16F, 32F)
- HOTEL ELEVATOR (4F, 6F, 16-32F)
- SERVICED RESIDENCES ELEVATOR (4-14F, 16F, 32F)

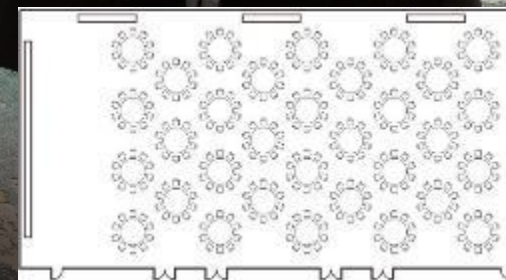




## GRAND BALLROOM VENDÔME



GRAND BALLROOM VENDÔME A/B/C :  
100pax / 42pax / 90pax



GRAND BALLROOM VENDÔME :  
320pax



GRAND BALLROOM VENDÔME :  
315pax

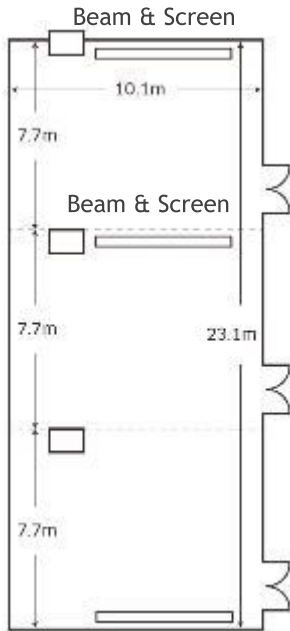
- 628 sqm with 5.5m ceiling
- Can be divided into three mid-size venues
- Seating up to 320 max, capable of hosting a variety of events
- LED Media wall(12m X 4.3m) and built-in sound system
- Gigabyte high speed internet
- Convenient access from the first floor to event venue by elevators and escalators



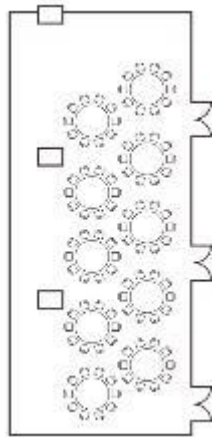
# MEETING & EVENT



## BASTILLE ROOM



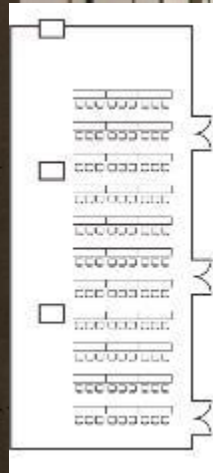
Beam & Screen  
Height : 2.6m



BASTILLE  
: 100pax

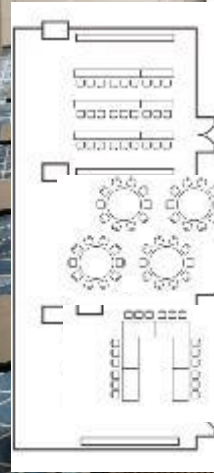
\*BASTILLE A&B&C  
Wireless Mic : 4EA  
Wired Mic : 4EA

\* Beam : 6,000ANSI  
Screen : 150inch



BASTILLE  
: 99pax

\*BASTILLE A/B/C  
Wireless Mic : 1EA  
Wired Mic : 1EA



BASTILLE A/B/C  
: 27pax/40pax/18pax



- 240 sqm mid-size Banquet space, can be divided into three breakout rooms
- Natural daylight with Seokchon Lake View



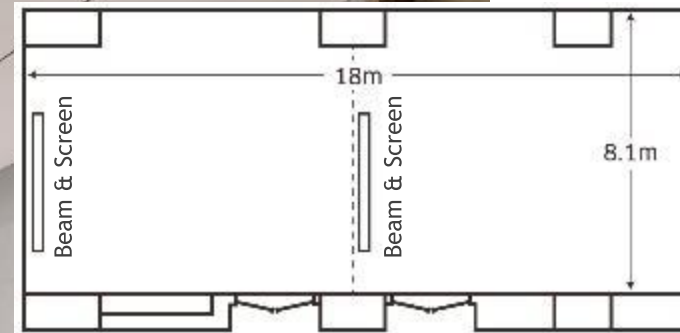
# MEETING & EVENT



## CONCORDE ROOM



\* Beam : 6,000ANSI / Screen : 150inch

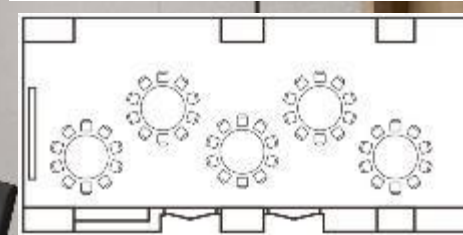


CONCORDE A&B

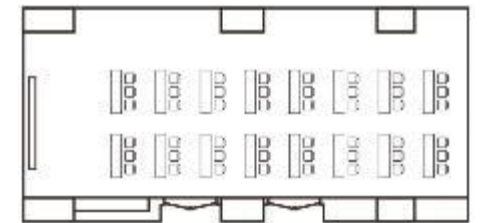
Wireless Mic : 2EA  
Wired Mic : 2EA

CONCORDE A/B

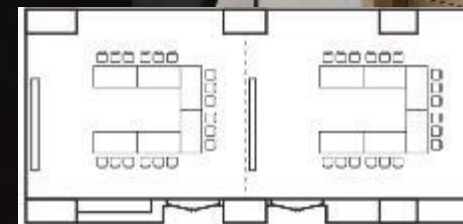
Wireless Mic : 1EA  
Wired Mic : 1EA



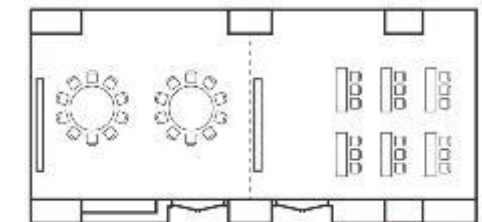
CONCORDE : 50pax



CONCORDE : 48pax



CONCORDE A/B : 18pax



CONCORDE A/B : 20pax/18pax

- The finest VIP room for small meetings in a stylish interior
- Independent meeting rooms suitable for private meetings and VIP event
- IT support for Video & Conference call with high-speed Internet and advanced sound equipment



MEETING & EVENT



JARDIN D'HIVER GARDEN





MAGNIFIQUE WEDDING



## MAGNIFIQUE WEDDING

Sofitel Magnifique wedding is made even more memorable by a unique blend of timeless Korean tradition and chic French style.

GRAND BALLROOM VENDÔME



LIVE THE FRENCH WAY

MERCI

SOFITEL  
HOTELS & RESORTS